



Collaborating for change ..

High quality (public) ECEC in an Integrated ECD system

at a municipal level

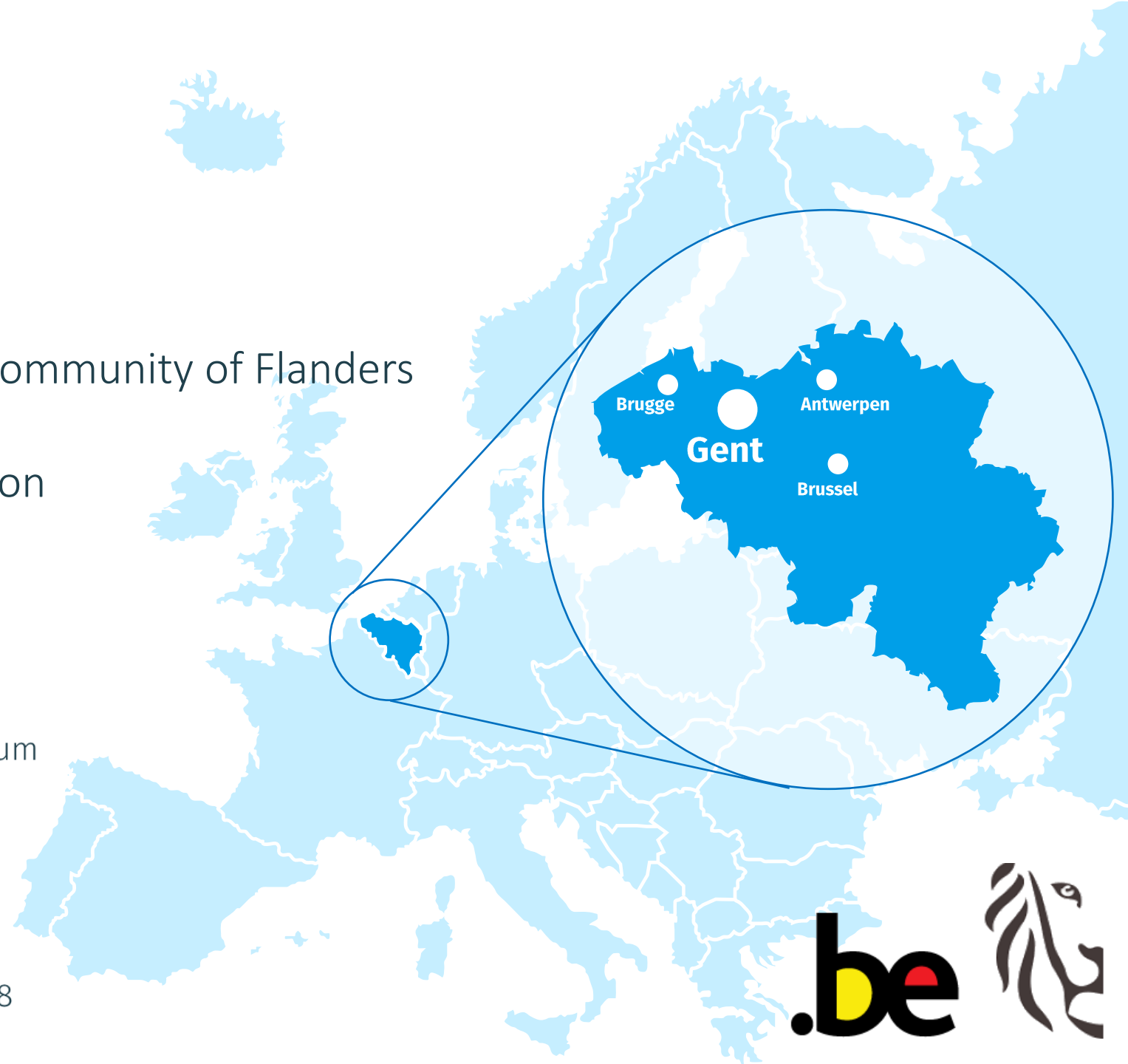
Bjorn Martens
Projectsmanager
Childcare Services / City of Ghent

Belgium

- Kingdom & Federal state
- Regions & communities
- ECEC is a responsibility for the community of Flanders
- Ghent is in Flanders
- Ghent has Flemish ECEC legislation

Ghent Facts Figures

-  266.926 inhabitants
-  3rd largest city in Belgium
-  156 km²
-  161 nationalities
-  81.676 students
-  45.510 scholars under 18



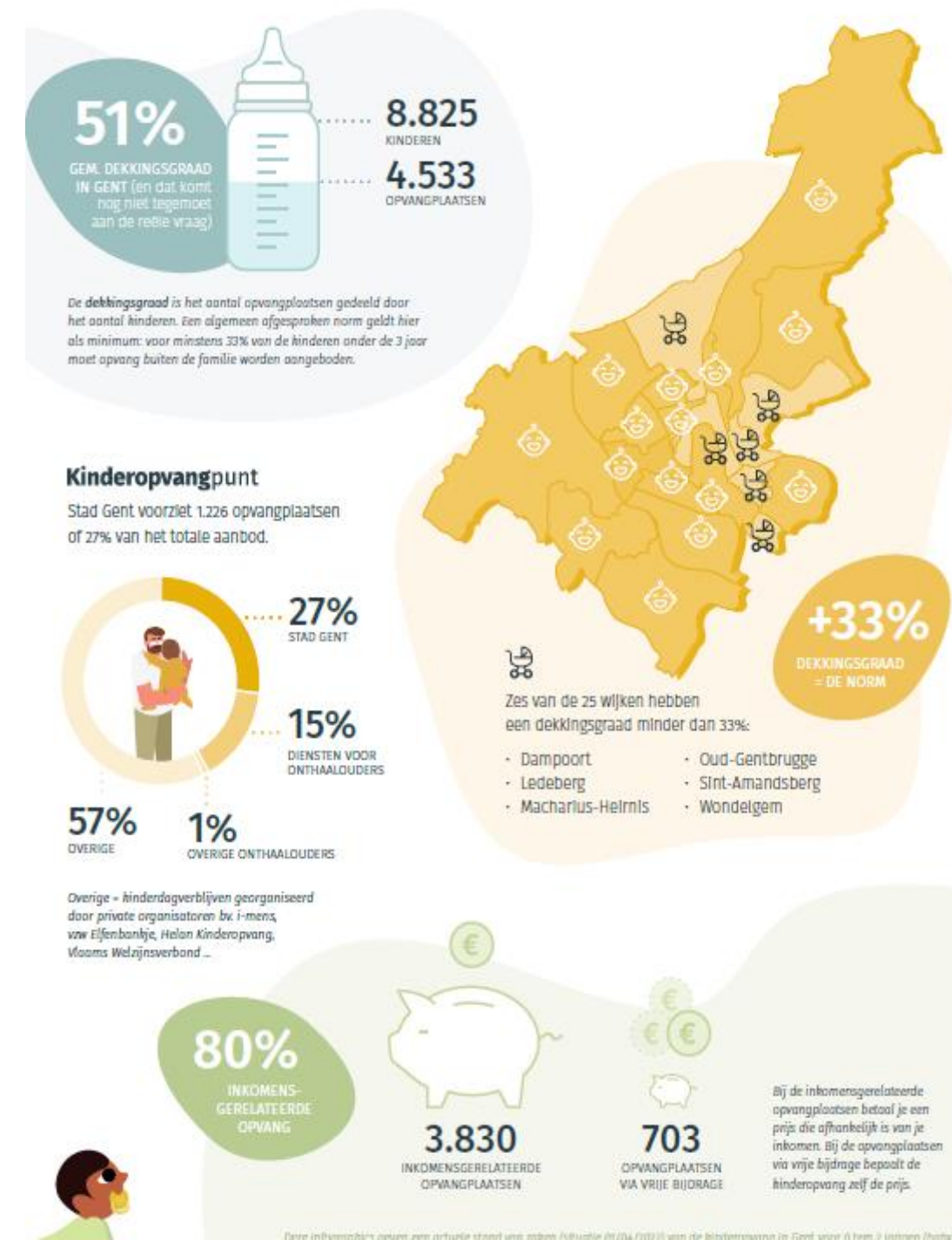
Who are we?

Childcare Services | City of Ghent

City of Ghent in a double role

- * *director for (all) childcare in Ghent*
- * *organizer of public childcare :*

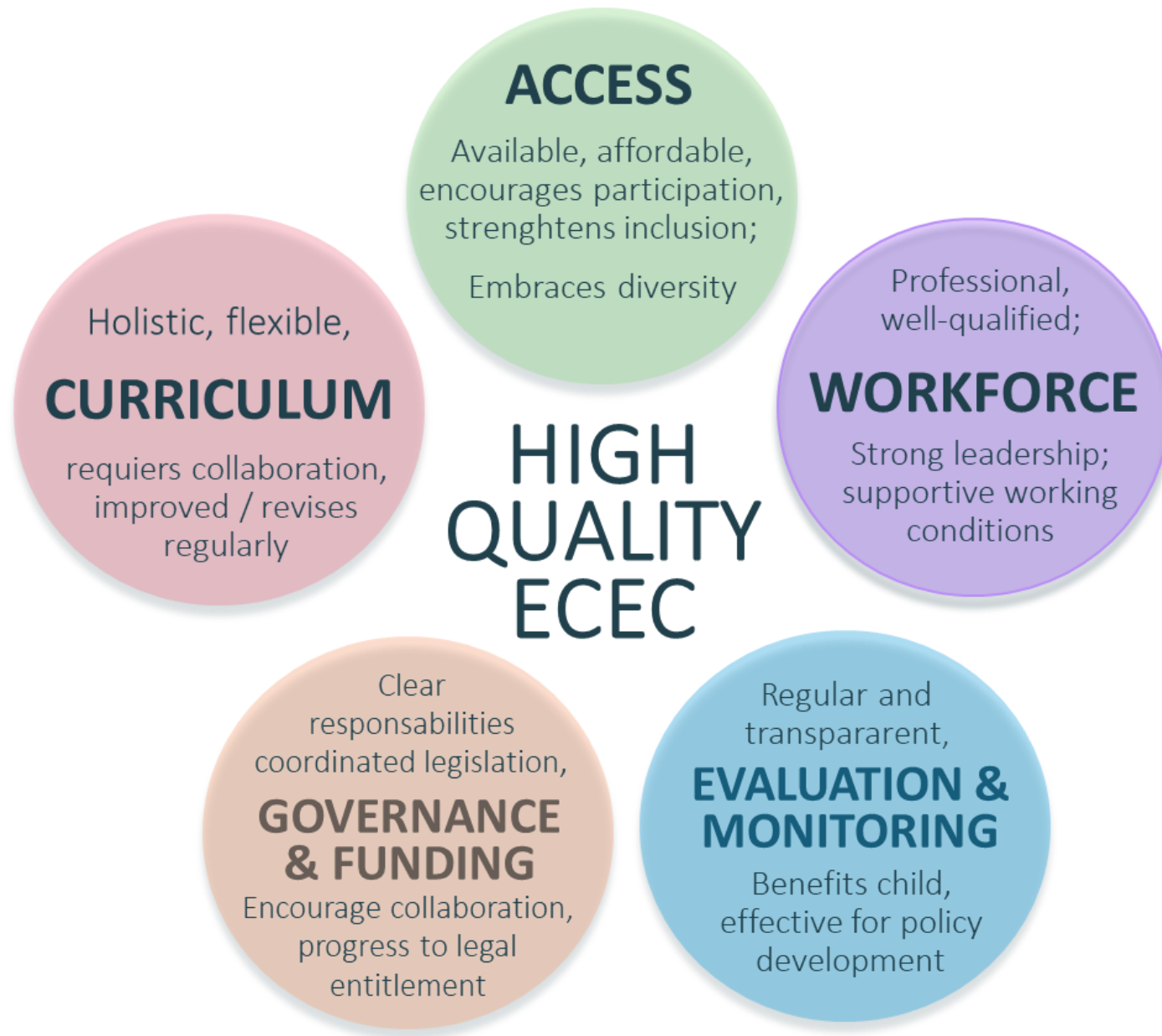
- 1296 places age 0-3 in 32 locations (27%)
- 45 locations Out of school care age 2,5 to 8|12
- 900+ childcare professionals
- Quality as a basic premise
- Competent system as organisation model





High
Quality
ECEC?

*‘Good childcare is good for children
(but children with a vulnerable background benefit more)’*



- Recommendation of European Council (2019)
- Inspiration for municipal policy & priorities
- Outline for today (focus 0-3)

European Quality Framework on ECEC



WG ECEC
European
Commission

Accessibility

- Provision that is **available and affordable** to all families and their children.
- Provision that encourages **participation**, strengthens social inclusion and embraces **diversity**.

- free early childhood education and care
- free education (including school-based activities and at least one healthy meal each school day)
- free healthcare
- healthy nutrition
- adequate housing



FUNCTIONS of ECEC

- Economical
- Pedagogical
- Social

Social coverage rate

Data driven

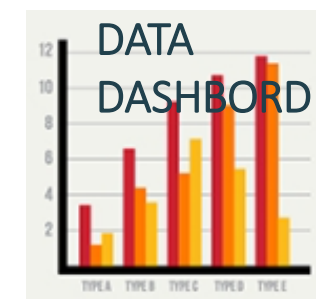
birth, families (with children), poverty, neighbourhood, childcare

This allows

- to identify the need of childcare on a neighbourhood level
- to identify neighbourhoods with vulnerable families with children
- to prioritize allocation of new childcare centres to (vulnerable) neighbourhoods
- to target accessible childcare to for vulnerable families
- to provide accessible childcare for every child



“Proportionate universalism”



Centralised enrollment

Based on transparent set of criteria for access and allocation

- Proximity to home
- Brother/sister in the same service
- Looking for) work, family context, single parent, (low) income, ..

This allows democratic access (in the face of shortages)

- Socio-economic mix (service level)
- Representing diversity / neighbourhood (service level)
- Accessibility for crises & special needs (service level)
- Balanced age mix (group level)
- Strengthens parental network (parent level)
- Democratic & transparent access (parent level)



Governance & Funding

- Stakeholders in the ECEC system have a clear and shared understanding of their role and responsibilities, and know that they are expected to **collaborate** with partner organisations.
- **Legislation, regulation and/or funding** supports progress towards a universal legal entitlement to publicly subsidised or funded ECEC, and progress is regularly reported to all stakeholders.

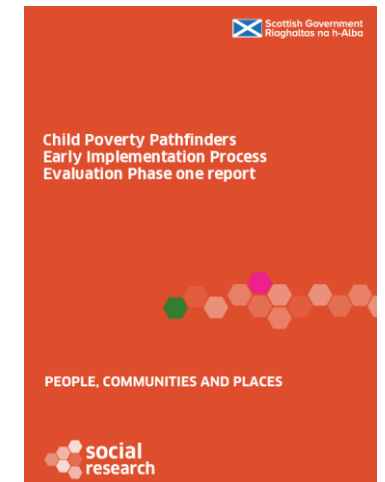




Before No Wrong Door Approach



After No Wrong Door Approach



RESEARCH

MIDFIELD

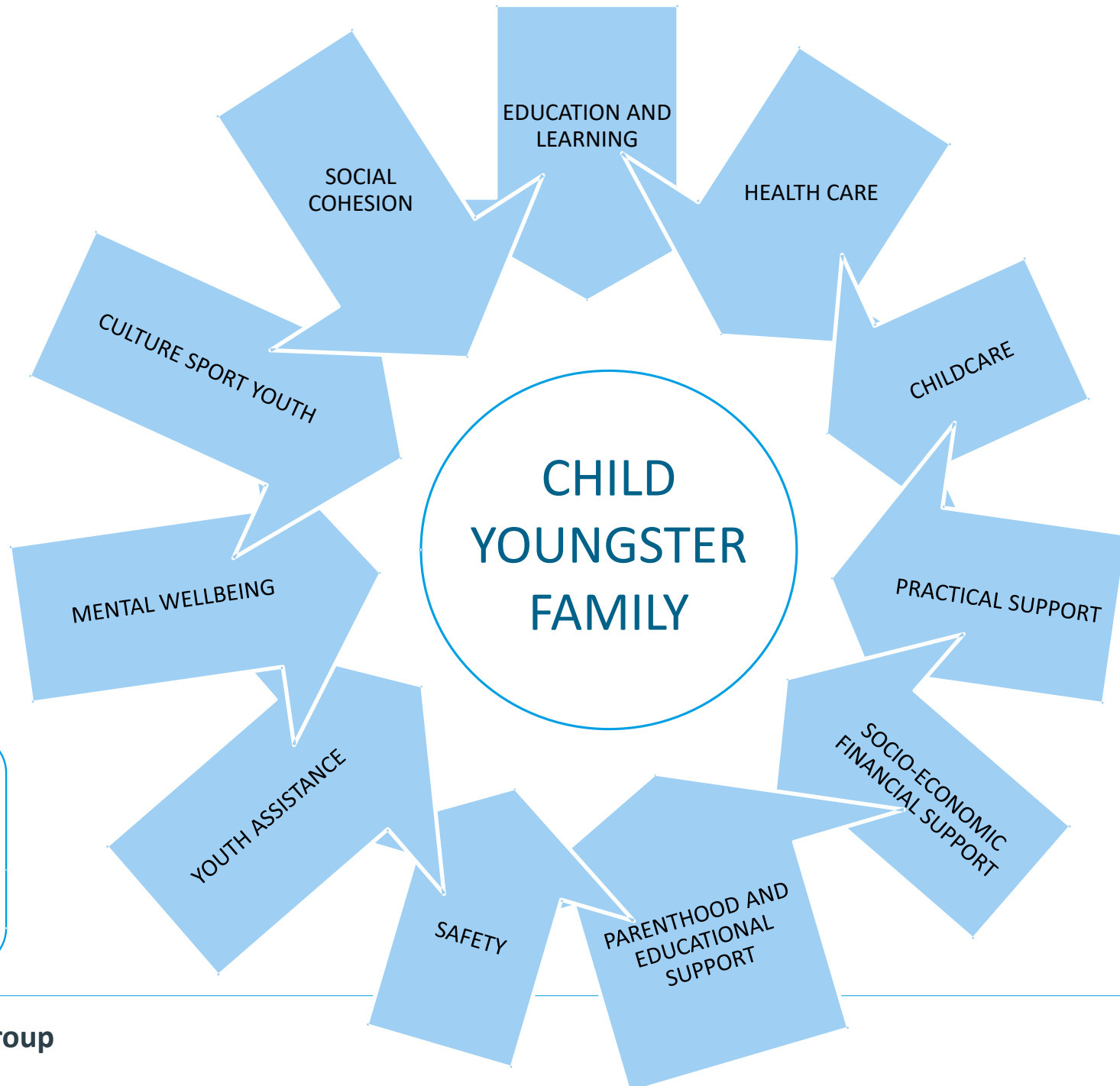
**'TRUST the
PROCESS'**

**CONNECT
KNOW
VALUE
TRUST
COLLABORATE**

POLITICS

GOVERNMENT
(local, Flemish)

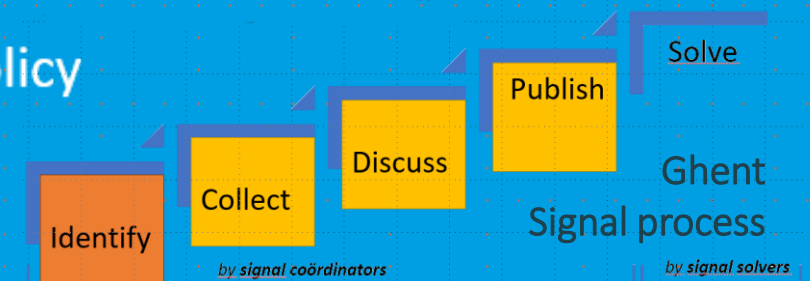
Ghent Family Policy Group



GROWING UP WITH OPPORTUNITIES IN GHENT SUPPORTING EVERY CHILD, EVERY FAMILY APPROPRIATELY

THE RIGHT SUPPORT
AT THE RIGHT TIME
IN THE RIGHT PLACE
WHERE NEEDED
FOR AS LONG AS NECESSARY

- Coordinating supra-local and locally integrated youth and family policy
- Following up on local signals and needs regarding the promising development of children and young people
- Outlining policy guidelines & vision on support for growing up, raising children, learning
- Focus on intersections and gaps in the provision of care and support for children, young people and (their) families
- Advising on (project) resources for youth care & family policy



GROEiTEAM : How we want to make services accessible :

A network of accespoints linking families to professionals

Thematic experts

On childcare, education,
family support,
welfare, mental health, ..

- Often more centralized services and less accessible (waiting lists)
- Clear referral by decentral growteams
- Part of the network by their expertise on family linked matters
- 'Central Growteam' as integrated service by the city of Ghent

Decentral 'Growteam'

engaged, mandated and trained
as **welcoming experts**

- Multiple accespoints in every neighborhood
- Training plan on accessibility & conversation techniques
- Intervention on neighborhood & city level (cases & FAQ)
- Thematic 'train the trainer' sessions
- Digital network communication

Solid base of (midfield & public) organisations

welcoming and reaching out to targetgroup of
families, children & youngsters as their daily mission.

- Often organised as thematic, geographical or targetgroup oriented (midfield) organisations & professionals
- Each with their targets, their expertise
- in almost every neighborhood

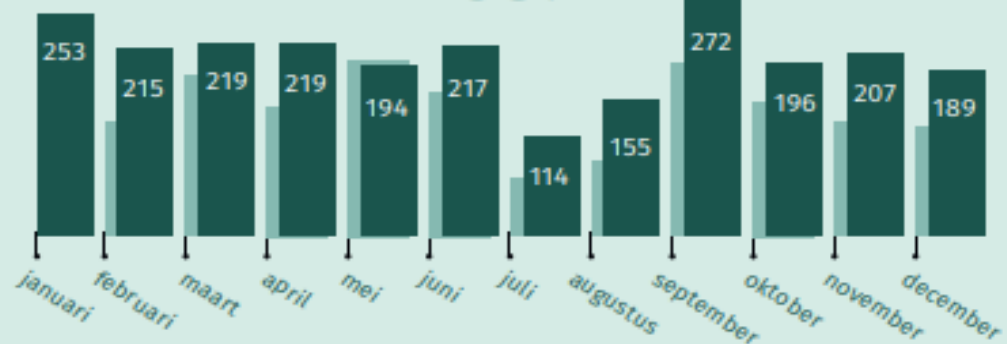
GOVERNANCE
& FUNDING

BEZOEKERS

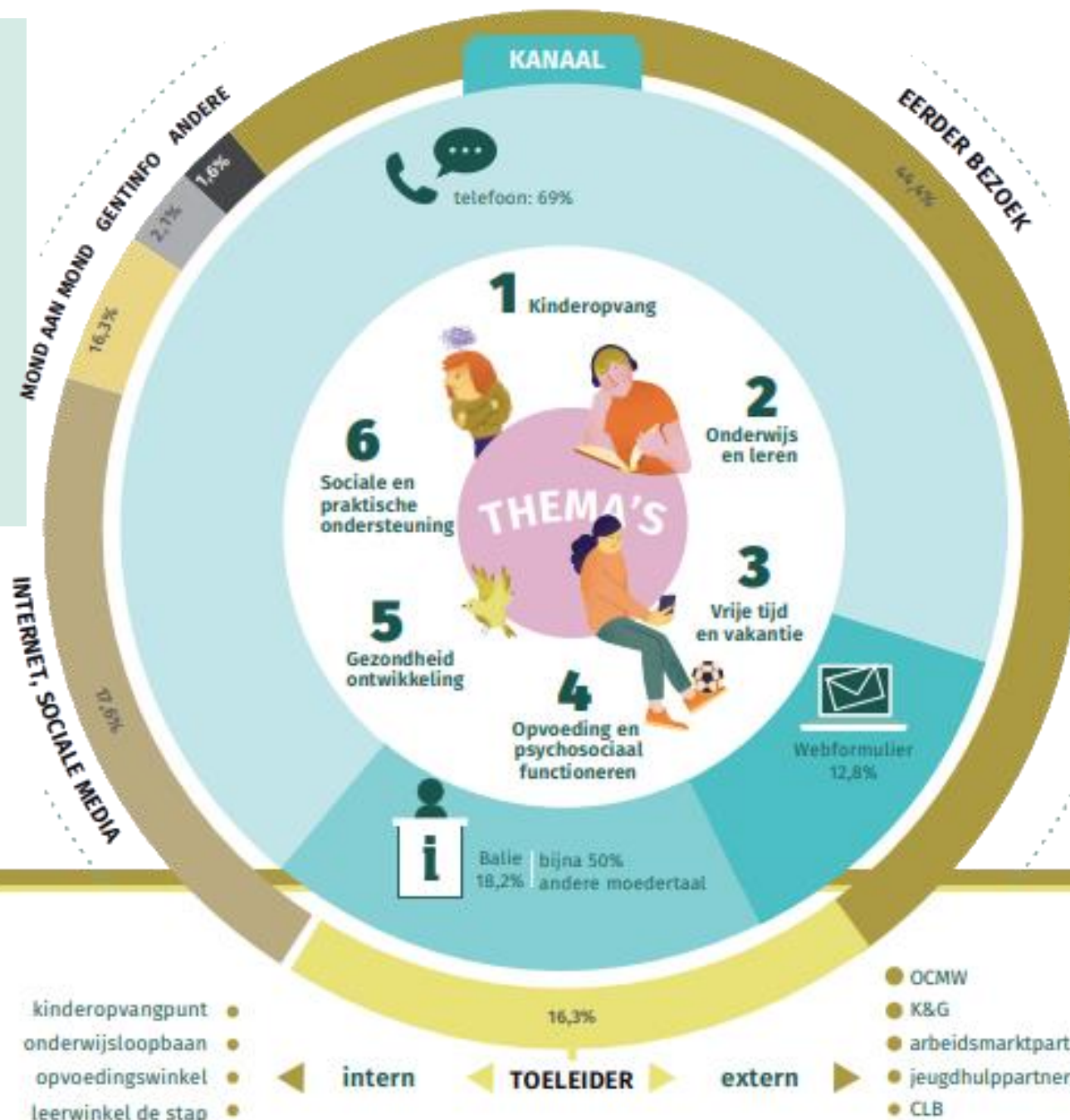
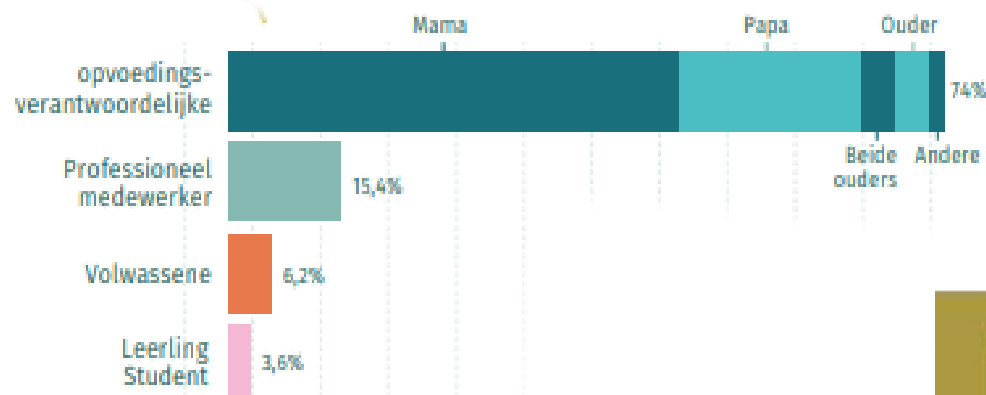
2024

2023

1587



profiel





THANK YOU!



visitgent



Bjorn Martens

Projectmanager | Childcare Services | City of Ghent

bjorn.martens@stad.gent

